



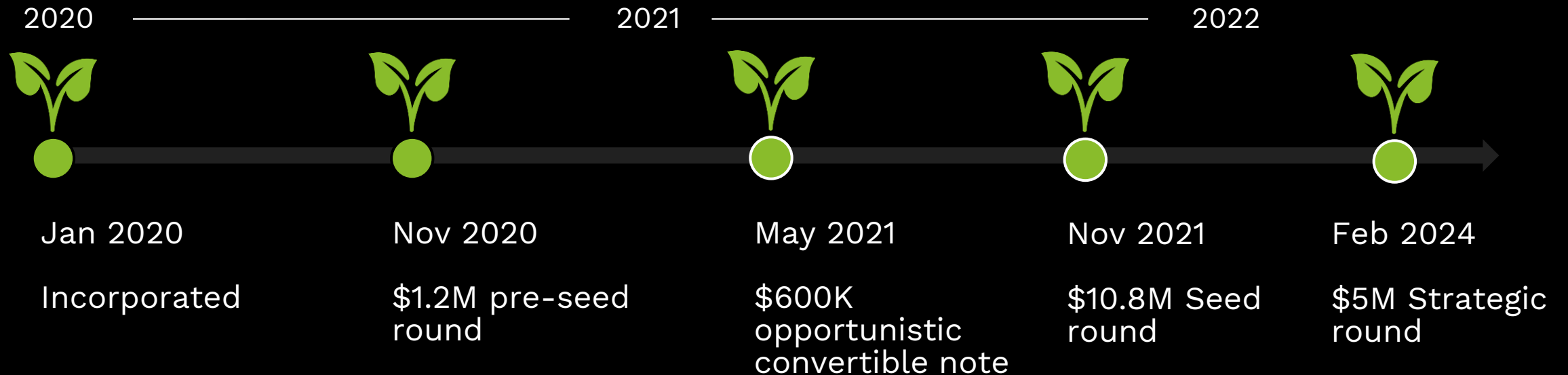
GARDIN

The Plant Computer

Raising a \$5M Seed+ round - \$1M committed by founder

Molten **LDV** CAPITAL **Seedcamp** **MMC**

Gardin is raising a \$5 million strategic round (\$1M from Founder).



Molten LDV CAPITAL Seedcamp MMC

My timeline.





Growers today drive the climate not the plants

Good on average, but significant
energy wasted and missed
opportunities for plant growth



GARDIN



Gardin links the climate to the plants

“Before I used Gardin, I mainly focused on the climate conditions in the greenhouse. I tried to set this as optimally as possible for the plants.

With Gardin I can measure the effect of the climate conditions based on the plants themselves.” –

*Leonard Boer,
FromBoer Lettuce, NL*

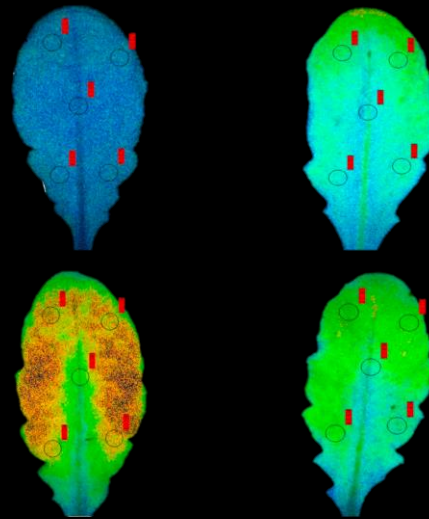


GARDIN

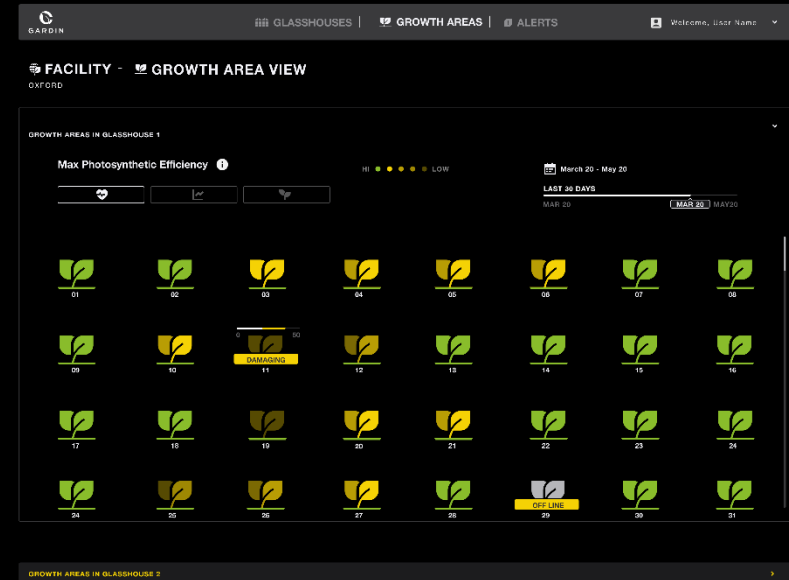
We have developed patented pioneering hardware and AI to provide crop insights through the Gardin Platform.



Built for scale: affordable, autonomous and robust measurements on any plant species



Deep insight: real-time measurements of photosynthetic rate generates unbeatable dataset



Plant driven growing: instant response data enables optimisation within production environment

A multidisciplinary team with a culture of learning from our combined experiences.



SUMANTA TALUKDAR
CEO



CONRAD LANGTON
CTO



ANDREW HUNTER-OSBORNE
OPERATIONS



MIGUEL JORDAO
STRATEGY & FINANCE



AMANDA MCGURK
CHIEF OF STAFF, FD



JOHN IBALL
PRODUCT



FABRIZIO TICCHIARELLI
BIOLOGY



RICHARD OSTERLOH
EMBEDDED SYSTEMS



JULIAN GODDING
DATA SCIENCE



CONNOR GODDARD
PLATFORM



ANGEL PEREZ
UX



KONSTANTIN MOVSHOVICH
HW

2 exits (one > \$500m)

Team of 23, 5 PhDs

Plant science, Computer Vision, AI, Robotics, Physics, Data engineering, Aerospace



NOKIA

INTUITIVE

nest

TOMTOM

Microsoft



And we are partnered with world class advisors.



DORN WENNINGER

Ex-VP Fresh Produce & Floral – Walmart (11 years)

Ex- Head Driscolls Europe



PROFESSOR TRACY LAWSON

Professor of Plant Physiology
Top 1% cited researchers in 2023

Director
Plant Phenomics Research Facility

“

What most excites me about Gardin is the ability to measure and monitor, in real time, how the plant itself is performing. **Gardin's sensors and data will help take agriculture to the next level** - Dorn Wenninger

”

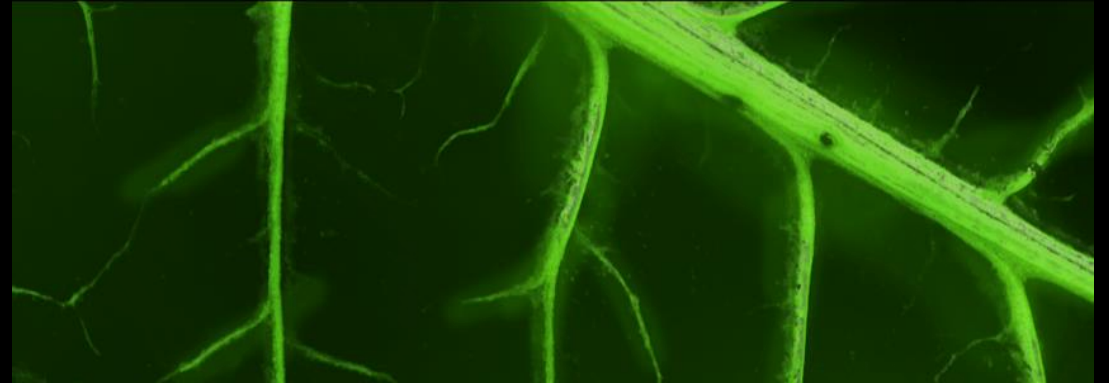
Plant driven growing in practice

VPD Optimisation

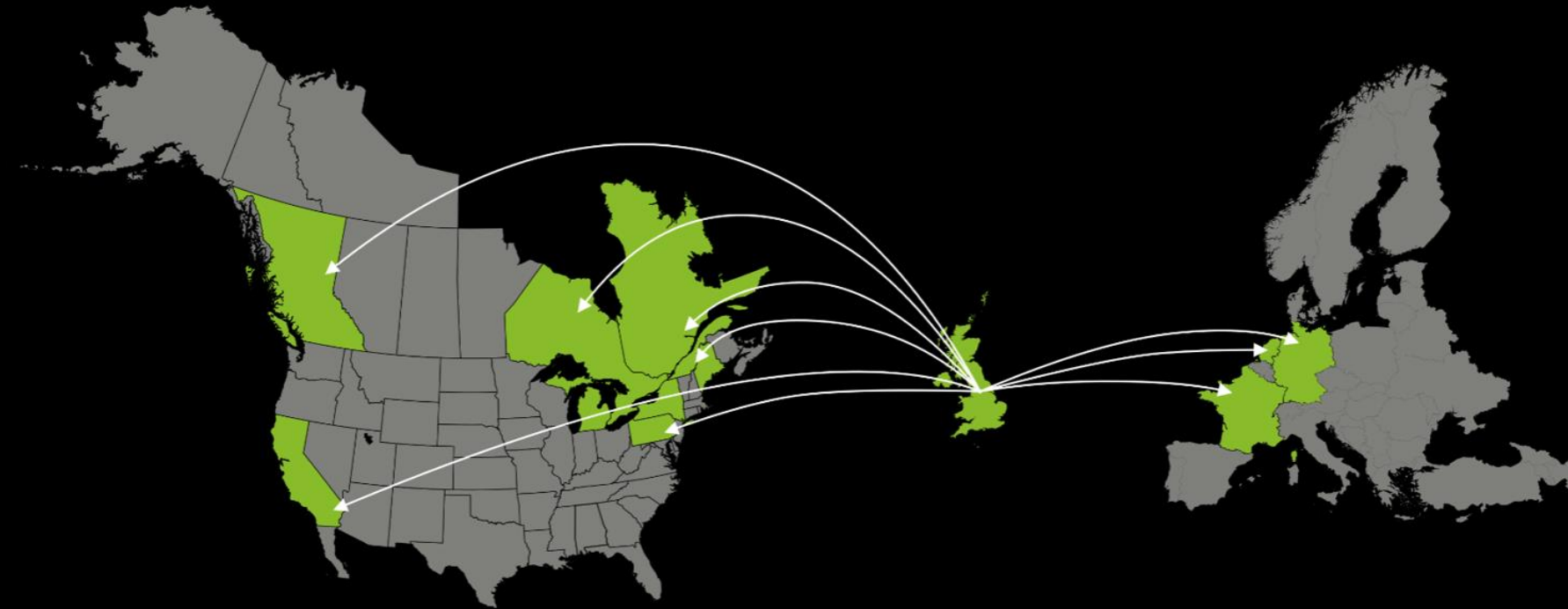
- 40% increase in productivity (kg/kWh) with temperature and humidity optimisation.
- 8% increase in annual yield (kg/m²/yr) for irrigation optimisation in commercial farm.

Lighting Optimisation

- 30-40% increase in annual yields (kg/m²/yr) optimising LED spectrum for commercial vertical farm.
- 27% higher performance for far-red treatment compared to flowering bulbs in strawberry cultivation in a commercial greenhouse.



Gardin achieved in 1 year what others said was impossible



6 International Patents UL Certified Product shipping to customers



We are moving fast ...In 6 months since product launch we have achieved.

20+

Species and growing

150+

Sensors shipped

20%+

MoM \$ growth

8

Countries

6m

Datapoints and growing
20%MoM

3

Global partnerships in place
to accelerate distribution



GARDIN

The only phenotyping platform for real-time response
agriculture

“My last startup exited for > \$500m, this time we are going to do better”

s.talukdar@gardin.ag